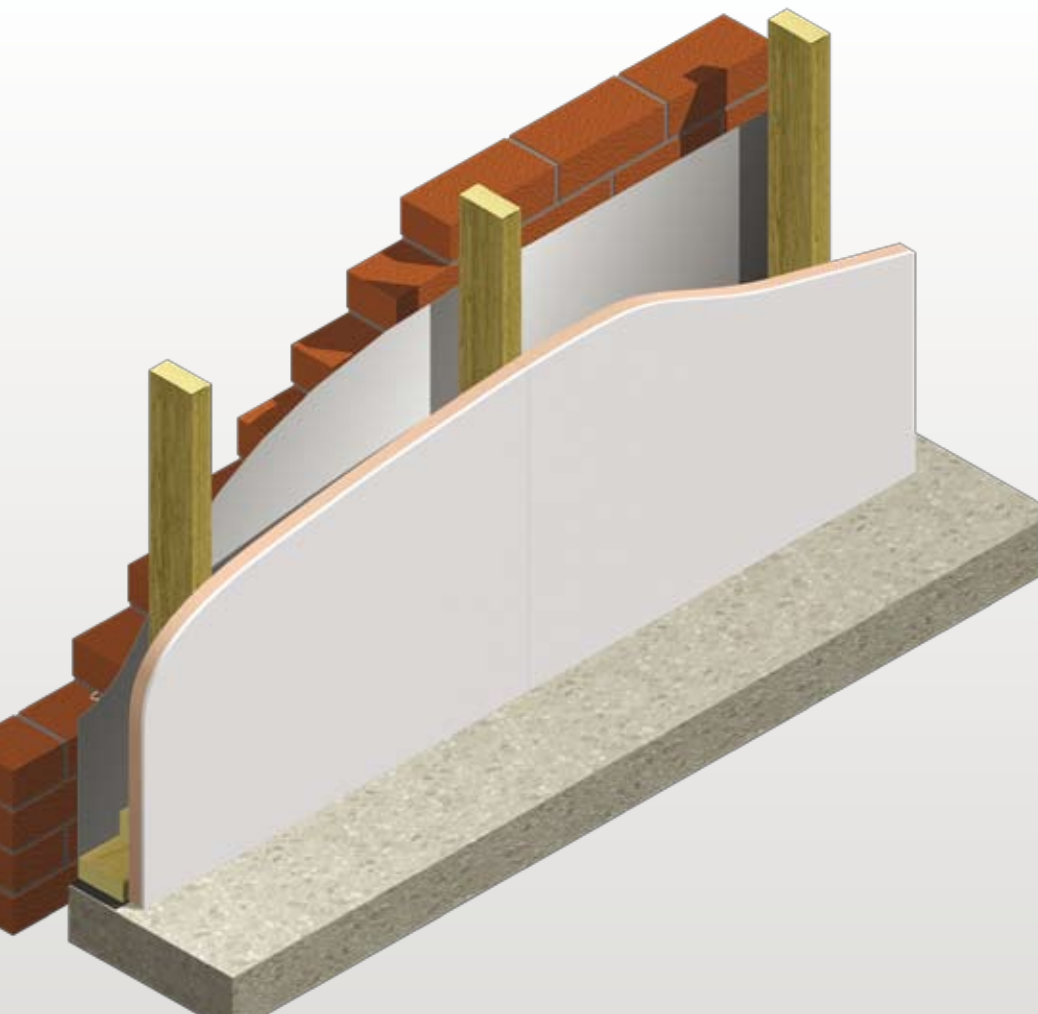


# Kooltherm® K18 Insulated Plasterboard

INSULATED DRY-LINING PLASTERBOARD FOR MECHANICAL FIXING



- Super high performance rigid thermoset modified resin insulation
- Fibre-free and non-itchy
- 3-in-1 insulation, dry-lining and vapour control
- Group 1 BCA fire classification
- Energy saving - allows quick response heating and cooling
- Clear cavity is maintained - resists moisture penetration
- Resistant to the passage of water vapour
- Easy to handle and install
- Ideal for new build and refurbishment
- CFC/HCFC-free with zero Ozone Depletion Potential (ODP)
- Compliant with AS/NZS 4859.1:2002



*Low Energy –  
Low Carbon Buildings*

# Kooltherm® K18 Insulated Plasterboard

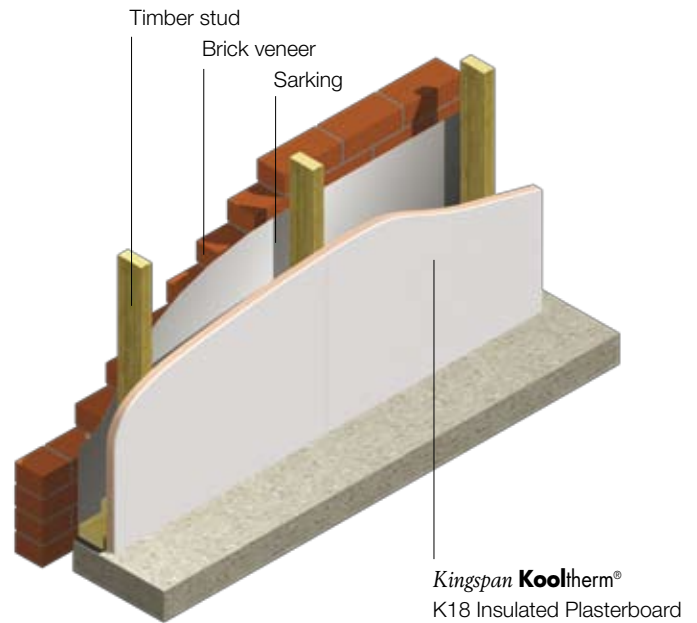
## Product Description

Kingspan **Kooltherm**® K18 Insulated Plasterboard is a super high performance, fibre-free rigid thermoset modified resin insulation, sandwiched between a front facing of tapered edge gypsum based plasterboard, and a reverse facing of low emissivity foil autohesively bonded to the insulation core during manufacture.

Kingspan **Kooltherm**® K18 Insulated Plasterboard is manufactured without the use of CFCs/HCFCs and has zero Ozone Depletion Potential (ODP).



Product Data	
Emittance (Foil Face)	E0.14
Board Dimensions	2270 mm x 1200 mm (2.72 m <sup>2</sup> )
Board Thickness (inc. Plasterboard)	32.5, 37.5, 42.5, 52.5, 57.5, 62.5, 67.5, 72.5, 77.5, 82.5 mm
Plasterboard Thickness	12.5 mm
Typical Insulation Density	35 kg/m <sup>3</sup>
Typical Weight	3.2 kg - 8.1 kg per board depending on thickness

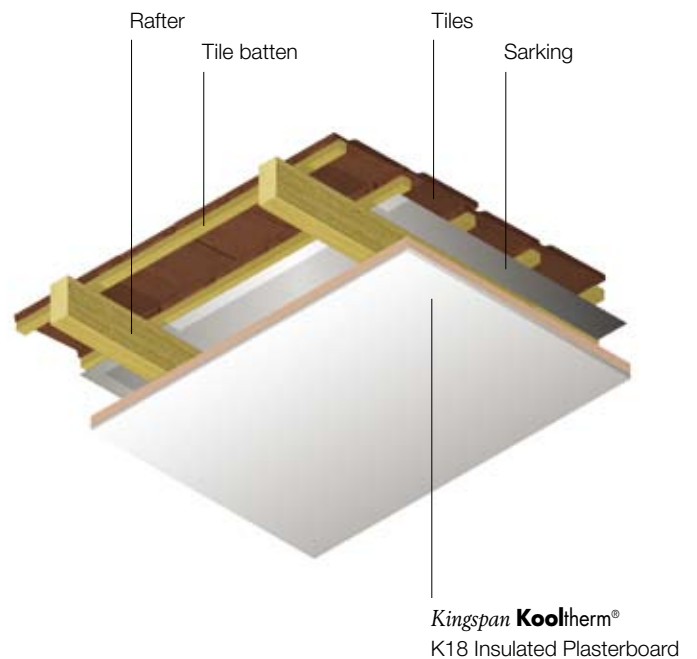


## Thermal Performance

The figures below are only for a selection of product thicknesses. Please contact the Kingspan Insulation Technical Services Department for calculations on product thicknesses not listed here.

Insulation Thickness	Product R-value	Total R-value			
		Brick veneer wall		Raked ceiling, tiled roof	
		Heat Flow In	Heat Flow Out	Heat Flow In	Heat Flow Out
32.5 mm	R0.9	R <sub>T</sub> 1.9	R <sub>T</sub> 2.0	R <sub>T</sub> 2.0	R <sub>T</sub> 1.7
37.5 mm	R1.2	R <sub>T</sub> 2.3	R <sub>T</sub> 2.3	R <sub>T</sub> 2.3	R <sub>T</sub> 2.1
42.5 mm	R1.4	R <sub>T</sub> 2.5	R <sub>T</sub> 2.6	R <sub>T</sub> 2.6	R <sub>T</sub> 2.3
47.5 mm	R1.6	R <sub>T</sub> 2.7	R <sub>T</sub> 2.8	R <sub>T</sub> 2.8	R <sub>T</sub> 2.5

*The R-values shown are Total R-values for the building element as required by the Energy Provisions of the Building Code of Australia. Kingspan Kooltherm® products are manufactured, tested and packaged in conformance with AS/NZS 4859.1:2002 - Amdt 1. The contribution of the product Total R-values depends on installation and environmental conditions. The R-value will be reduced in the event of the accumulation of dust on the upward facing surfaces and in those cavities that are ventilated.*



## Fire Performance

Test	Test Method	Result
Surface Spread of Flame	BS476 (Parts 6 & 7)	Class 0 ( <b>Kooltherm</b> ®)



**Kingspan Insulation Pty Ltd**

Tel: 1300 247 235

Email: [info.au@insulation.kingspan.com](mailto:info.au@insulation.kingspan.com)

[www.insulation.kingspan.com.au](http://www.insulation.kingspan.com.au)

© Kingspan, Kooltherm, the zo Device and the Lion Device are Registered Trademarks of the Kingspan Group plc in Australia and other countries. All rights reserved.