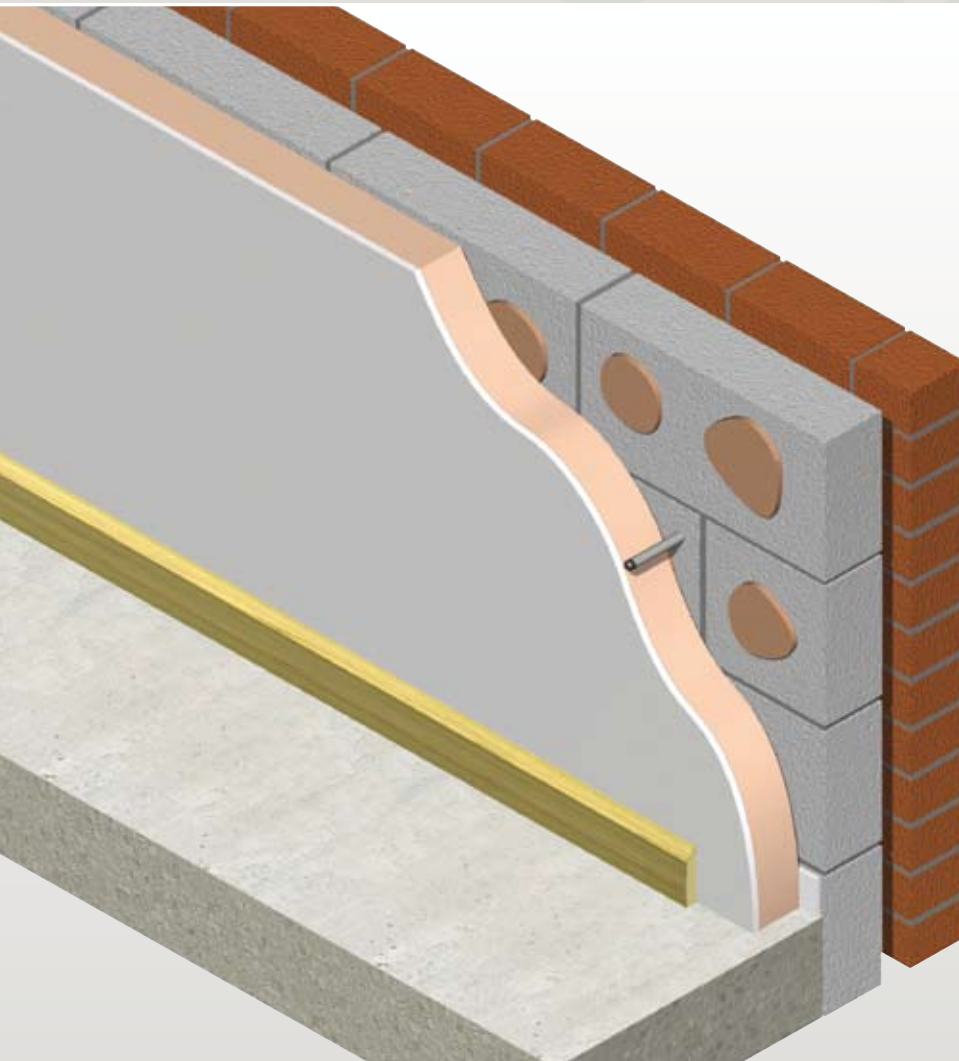


Kooltherm® K17 Insulated Plasterboard

INSULATED DRY-LINING PLASTERBOARD FOR
PLASTER DAB/ADHESIVE BONDING



- Super high performance rigid thermoset modified resin insulation
- Fibre-free insulation core
- 3-in-1 insulation, dry-lining and vapour control
- Group 1 BCA fire classification
- Energy saving - allows quick response heating and cooling
- Clear cavity is maintained - resists moisture penetration
- Resistant to the passage of water vapour
- Easy to handle and install
- Ideal for new build and refurbishment
- CFC/HCFC-free with zero Ozone Depletion Potential (ODP)
- Compliant with AS/NZS 4859.1:2002



*Low Energy –
Low Carbon Buildings*

Kooltherm® K17 Insulated Plasterboard

Product Description

Kingspan Kooltherm® K17 Insulated Plasterboard is a super high performance, fibre-free rigid thermoset modified resin insulation core, sandwiched between a front facing of tapered edge gypsum based plasterboard, and a reverse tissue based facing autohesively bonded to the insulation core during manufacture.

Kingspan Kooltherm® K17 Insulated Plasterboard is manufactured without the use of CFCs/HCFCs and has zero Ozone Depletion Potential (ODP).



Product Data	
Board Dimensions	2270 mm x 1200 mm (2.72 m ²)
Board Thickness (inc. Plasterboard)	32.5, 37.5, 42.5, 52.5, 57.5, 62.5, 67.5, 72.5, 77.5, 82.5 mm
Plasterboard Thickness	12.5 mm
Typical Insulation Density	35 kg/m ³
Typical Weight	3.2 kg - 8.1 kg per board depending on thickness

Thermal Performance

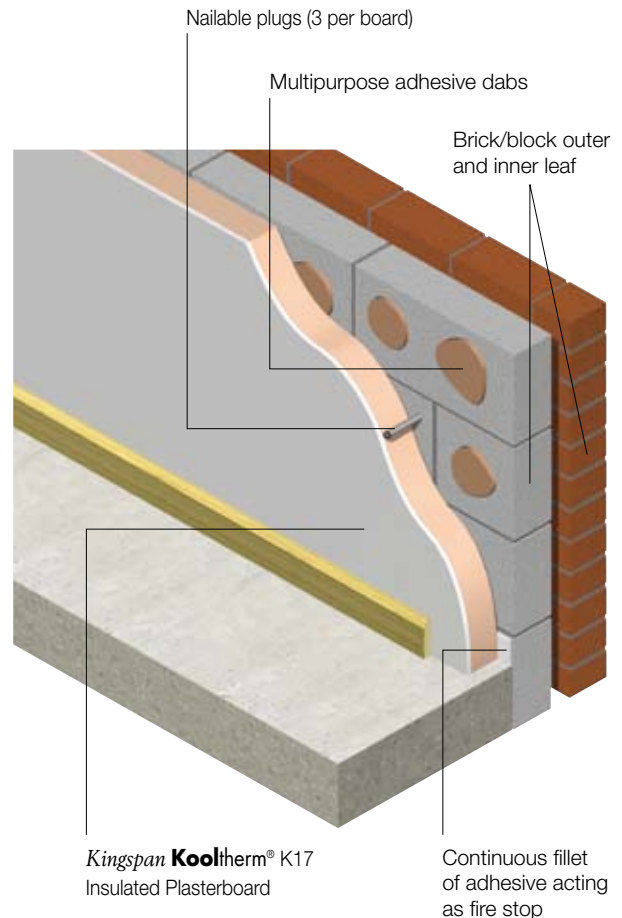
The figures below are only for a selection of product thicknesses. Please contact the Kingspan Insulation Technical Services Department for calculations on product thicknesses not listed here.

Insulation Thickness	Product R-value	Total R-value			
		150 mm concrete wall		Masonry block wall	
		Heat Flow In	Heat Flow Out	Heat Flow In	Heat Flow Out
62.5 mm	R2.4	R _T 2.8	R _T 2.8	R _T 2.9	R _T 2.9
67.5 mm	R2.7	R _T 3.1	R _T 3.1	R _T 3.1	R _T 3.1
72.5 mm	R2.9	R _T 3.3	R _T 3.3	R _T 3.4	R _T 3.4
82.5 mm	R3.4	R _T 3.8	R _T 3.8	R _T 3.9	R _T 3.9

The R-values shown are Total R-values for the building element as required by the Energy Provisions of the Building Code of Australia. Kingspan Kooltherm® products are manufactured, tested and packaged in conformance with AS/NZS 4859.1:2002 - Amdt 1. The contribution of the product Total R-values depends on installation and environmental conditions. The R-value will be reduced in the event of the accumulation of dust on the upward facing surfaces and in those cavities that are ventilated.

Fire Performance

Test	Test Method	Result
Surface Spread of Flame	BS476 (Parts 6 & 7)	Class 0 (Kooltherm®)



Kingspan Insulation Pty Ltd

Tel: 1300 247 235

Email: info.au@insulation.kingspan.com

www.insulation.kingspan.com.au

© Kingspan, Kooltherm, the zo Device and the Lion Device are Registered Trademarks of the Kingspan Group plc in Australia and other countries. All rights reserved.